



PRODUCT APPLICATION

REXPRO™ ENGINEERED STEEL CHAIN

A SAFER FIELD CONNECTION LINK

SAFER CONNECTIONS. BETTER PERFORMANCE.

RexPro engineered steel chain with our exclusive field connection link makes assembling and maintaining engineered steel chain safer, faster, easier, and more cost-effective than other chains.

Other engineered steel chains aren't as strong or durable, and legacy field connection methods are time consuming, hard to use, and offer less than reliable results. Regal Rexnord has launched a new engineered steel chain under its trusted RexPro brand. Our exclusive field connection link is safer, and it doesn't require complex tools or dangerous homegrown solutions.

Our new RexPro engineered steel chain field connection link requires two workers, uses tools found in every mechanic's toolbox, and can be executed in half the time or less. When considering the total cost of ownership our chain costs less too.

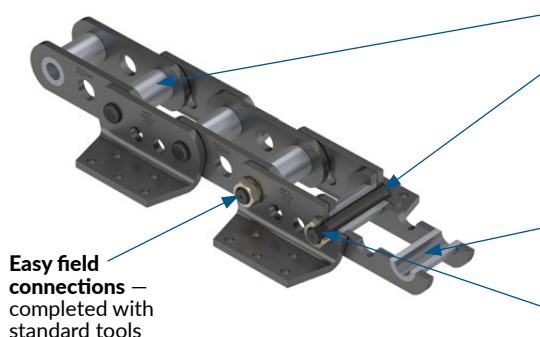
SAFETY

Engineered steel chain users identify safety as "very important". Catastrophic accidents related to broken or worn-out engineered steel chain are far too common, and it affects our customers, their employees, and their families. RexPro engineered steel chain with our exclusive field connection link eliminates the need for cumbersome heavy tools and reduces exposure to potentially dangerous work environments.

UPTIME

Downtime is not an option for engineered steel chain users. Shutting down a plant can cost owners more than \$100K per day in lost production alone. Maintaining a factory fit when connecting chain is the key to avoiding costly unscheduled downtime and unsafe work conditions. The RexPro engineered steel chain field connection link delivers a safer, faster, easier field connection that ensures a factory fit in the field maximizing chain life, strength, and a more cost-effective chain.

ENGINEERED FOR STRENGTH AND DURABILITY.



Optimize performance — all loaded components are through hardened to maximize strength

Maximize equipment uptime — the fit of pins and bushings distribute load evenly in sidebars

Maximize uptime and throughput — RexPro field connection guarantees the chain joint has the same load carrying capacity and wear characteristics of the chain

Maximize process throughput — case induction hardened pins and deep case carburized bushings resist wear

Reduce exposure to safety risk during maintenance — intuitive field connections are executed quickly



RexPro™
Engineered Steel Chain

INDUSTRIES SERVED

- Cement
- Aggregate
- Fertilizer
- Asphalt
- Mining
- Pulp & Paper

KEY APPLICATIONS

Bucket Elevators

- Centrifugal Discharge, Mill-Duty, High Performance
- Gravity Discharge, Hi-Load, Super Capacity
- Industrial
- Continuous Discharge

FEATURES

- RexPro engineered steel chain field connection link
- Proprietary heat-treatment of pins and bushings
- Controlled pin and bushing fit into sidebars
- Heat-treated and shot peened sidebars

BENEFITS

Safety

- Reduce tool weight
- Reduce pinch points
- Eliminate the use of heat sources during installation and field connection work
- Perform installation and maintenance work less frequently and spend less time doing the work

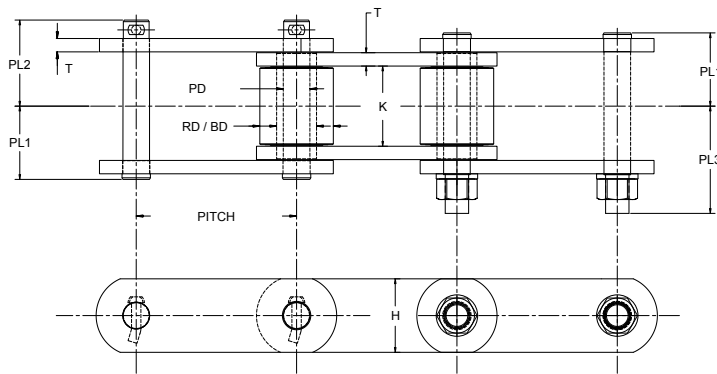
Uptime

- Achieve factory fit at field connections
- Industry leading wear life
- Maximum fatigue life
- Better cost of ownership

RegalRexnord™

Our exclusive field connection link is safer and doesn't require complex tools

REXPRO™ ENGINEERED STEEL CHAIN



RexPro Engineered Steel Chain — Description and Attributes *All dimensions are in inches unless otherwise stated.*

RexPro Chain No.	Pitch Length	Sidebars			Pins				Roller	Bushing	Assembly		Sprocket Unit No.
		Distance Between Sidebars	Thickness	Height	Diameter	Standard Pin Length			Outside Diameter	Outside Diameter	Rec. Drive Socket	Rec. Driver Torque Capacity (ft-lb)	
						K	T	H					
ER856ML-K23-EV2	6	3	0.5	2.5	1	2.85	3.26	3.4	NA	1.75	1-5/16	750	856
ER856ML-K24-EV2	6	3	0.5	2.5	1	2.85	3.26	3.4	NA	1.75	1-5/16	750	856
ER856ML-K24-EV3	6	3	0.5	2.5	1	2.85	3.26	3.4	NA	1.75	1-5/16	750	856
ER856ML-K24 EV3	6	3	0.5	2.5	1	2.85	3.26	3.4	NA	1.75	1-5/16	750	856
ER856ML-K26 EV2	6	3	0.5	2.5	1	2.85	3.26	3.4	NA	1.75	1-5/16	750	856
ER856ML-K66 EV2	6	3	0.5	2.5	1	2.85	3.26	3.4	NA	1.75	1-5/16	750	856
ER856ML-K35 EV2	6	3	0.5	2.5	1	2.85	3.26	3.4	NA	1.75	1-5/16	750	856
ER856ML-K35 EV3	6	3	0.5	2.5	1	2.85	3.26	3.4	NA	1.75	1-5/16	750	856
ER856ML- K3 EV3	6	3	0.5	2.5	1	2.85	3.26	3.4	NA	1.75	1-5/16	750	856
ER857ML-K44-EV2	6	3	0.5	3.25	1	3.19	2.89	3.06	NA	1.75	1-5/16	750	856
ER859ML-K44-EV2	6	3.75	0.63	4	1.25	3.56	3.88	4.17	NA	2.38	1-5/16	750	859
ER859ML-K44-EV3	6	3.75	0.63	4	1.25	3.56	3.88	4.17	NA	2.38	1-5/16	750	859
SJM859ML-K44-EV2	6	3.69	0.63	4	1.25	3.81	4.03	4.14	NA	2.38	1-5/16	750	859
ER956ML-K24-EV2	6	2.95	0.5	3	1	2.89	3.19	3.36	NA	1.75	1-5/16	750	856
SJM956ML-K24-EV2	6	2.88	0.5	3	1	3.08	3.38	3.17	NA	1.75	1-5/16	750	956
ER958ML-K44-EV2	6	3	0.63	3.25	1.13	2.85	3.22	3.55	NA	2	1-1/2	750	958
SJM958ML-K44-EV2	6	2.94	0.5	3.25	1.13	3.12	3.49	3.84	NA	2	1-1/2	750	958
ER979ML-K44-EV2	6	3.69	0.62	4	1.37	3.49	3.83	4.29	NA	2.5	1-1/2	750	979
ER864ML-K443-EV2	7	3.75	0.63	4	1.25	3.56	3.88	4.17	NA	2.38	1-5/16	750	864
SJM864MLHT-K443-EV2	7	3.69	0.63	4	1.25	3.56	4.03	4.14	NA	2.38	1-5/16	750	864
ER984ML-K443-EV2	7	3.75	0.62	4	1.38	3.44	3.85	4.34	NA	2.5	1-1/2	750	984
SJM984ML-K443-EV2	7	3.69	0.62	4	1.38	3.69	4.02	4.48	NA	2.5	1-1/2	750	984
ER2866ML-K443-EV2	7	4.44	0.62	4	1.37	3.84	4.19	4.65	NA	2.37	1-1/2	750	2866
ER7984ML-G4-EV4	7	3.69	0.62	4	1.38	3.44	3.85	4.3	3	2	1-1/2	750	984
R4004ML-G6-EV2	9	2.63	0.5	2.63	1	2.58	2.97	3.32	3	1.5	1-5/16	750	4004
R4037ML-G5-EV2	9	3.17	0.62	4	1.5	3.24	3.56	4.05	4.5	2.12	1-7/8	750	4037
R4037ML-G6-EV2	9	3.17	0.62	4	1.5	3.24	3.56	4.05	4.5	2.12	1-7/8	750	4037
R3250ML-G6-EV2	9	3.44	0.63	4	1.62	3.38	3.67	4.19	3.5	2.38	1-7/8	750	3250
2864ML-G4-EV2	9	2.7	0.5	3.5	1.25	2.69	3.13	3.35	3.5	2	1-5/16	750	864
R4010ML-G16-EV2	12	3.25	0.63	4	1.5	3.23	3.57	3.72	4.5	2.12	1-7/8	750	4010
R2296ML-G165	18	2.44	0.38	2.5	0.75	2.2	2.34	2.84	NA	2	15/16	750	2296

Assembly: We recommended assembly with an impact driver, reference the table for recommended socket size and driver torque

Pins: All pins for the chains in this table are through hardened and carburized

Bushings: All bushings for chains in this table are deep case carburized

Rollers: All rollers for applicable chains in this table are carburized

Rex® Regal Rexnord™

Motion Control Solutions Regal Rexnord

Contact us: rexnord.com/contact

regalrexnord.com

The proper selection and application of products and components, including assuring that the product is safe for its intended use, are the responsibility of the customer. To view our Application Considerations, please visit <https://www.regalrexnord.com/Application-Considerations>.

To view our Standard Terms and Conditions of Sale, please visit <https://www.regalrexnord.com/Terms-and-Conditions-of-Sale> (which may redirect to other website locations based on product family).

"Regal Rexnord" is not indicative of legal entity. Refer to product purchase documentation for the applicable legal entity.

Regal Rexnord, Rex and RexPro are trademarks of Regal Rexnord Corporation or one of its affiliated companies.

© 2022 Regal Rexnord Corporation, All Rights Reserved. MCSSP22106E • Form# 10497E



мультибрендова компанія

ТОРГОВИЙ ДІМ

ГалПідшипник

Офіційний дистриб'ютор провідних світових брендів в Україні

79035, Львів, вул. Зелена, 238-3
04080, Київ, вул. Кирилівська, 69-Б
69068, Запоріжжя, вул. Фонвізіна, 8
65013, Одеса, вул. Миколаївська дорога, 140
61177, Харків, вул. Залютинська, 10
21012, Вінниця, вул. Данила Нечая, 65, оф. 122
25014, Кропивницький, пр. Інженерів, 8, оф. 303
58001, Чернівці, вул. Героїв Майдану, 33
33009, Рівне, вул. Млинівська, 3-а

тел/факс: (032) 297-65-66, 297-01-93
тел/факс: (044) 501-28-28, 451-85-10
тел/факс: (061) 213-91-26, 213-90-03
тел/факс: (048) 717-44-31, 717-44-32
тел/факс: (057) 777-66-33, 777-65-79
тел/факс: (0432) 68-79-81
тел/факс: (0522) 35-76-77, 35-76-88
тел/факс: (050) 070-11-03
тел/факс: (0362) 682-682

www.galp.com.ua